

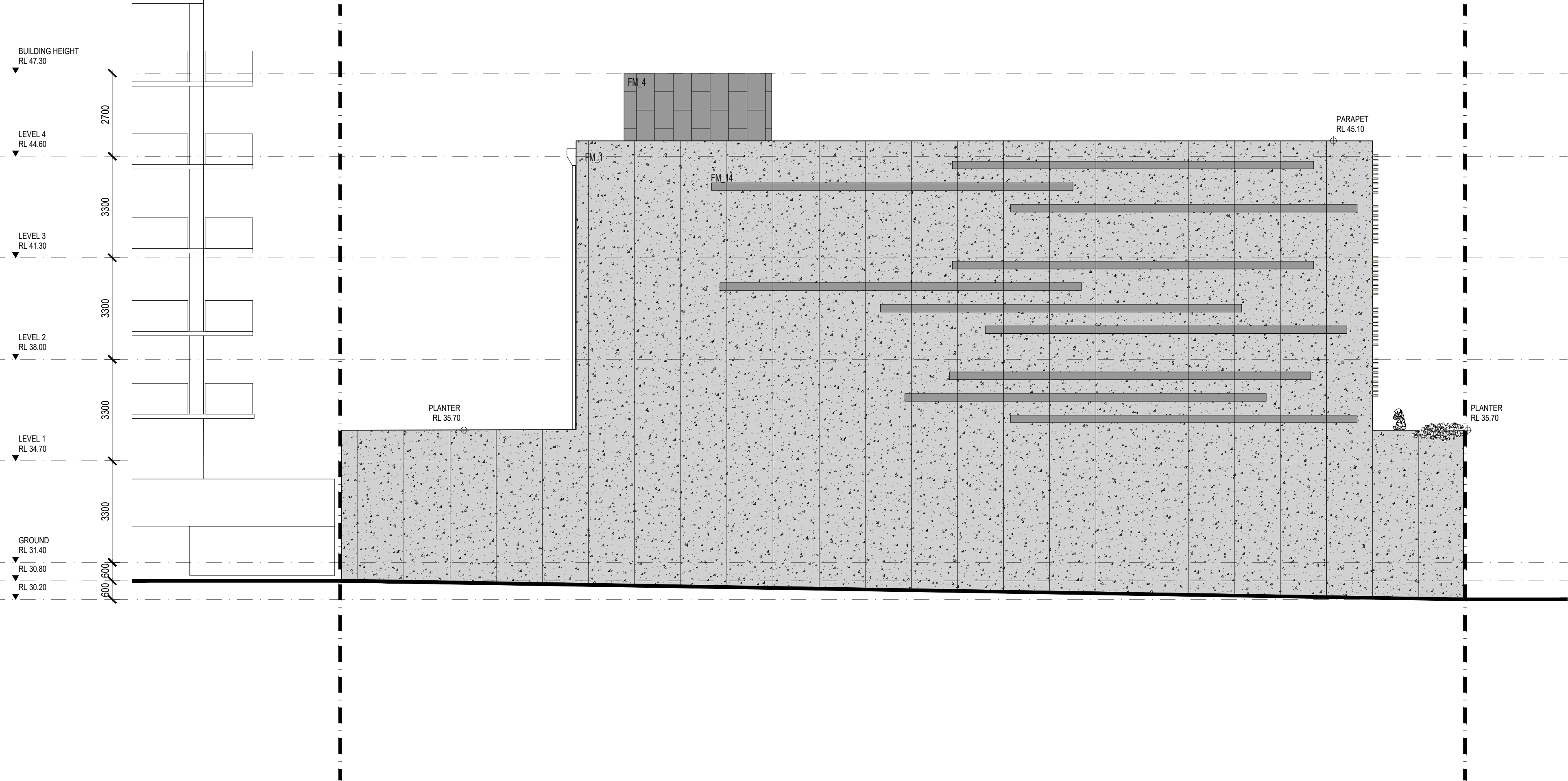
01 WEST STREET ELEVATION

MATERIAL SCHEDULE

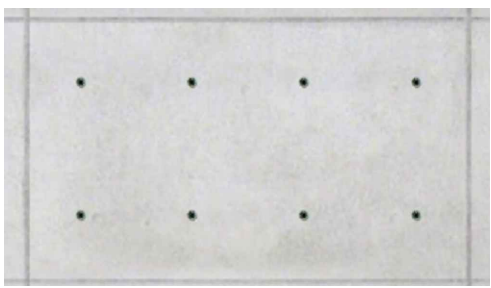
- FM\_1 - ON SITE CONCRETE - TEXTURE\_1  
FM\_2 - ON SITE CONCRETE - TEXTURE\_2  
FM\_3 - CFC CLADDING - EXO TEC - HAVANA COLOUR  
FM\_4 - CFC CLADDING - EQUITONE TECTIVA - COLOUR TE85 GRAPHITE EXPOSED JOINTS
- FM\_10 - PC ALUMINIUM CURTAIN WALL - SUN SHADE BRACKET - MONUMENT COLOUR  
FM\_11 - PC ALUMINIUM SUN SHADE PROFILE - HAVANA COLOUR  
FM\_12 - PC ALUMINIUM COMERCIAL RANGE WINDOWS AND DOORS - MONUMENT COLOUR  
FM\_13 - PC ALUMINIUM LOUVER WINDOWS & DOOR - MONUMENT COLOUR  
FM\_14 - PC ALUMINIUM HORIZONTAL ELEMENTS - HAVANA COLOUR

ALL ROOF TO BE COLOURBOND ROOF SHEETING - WHITE COLOUR

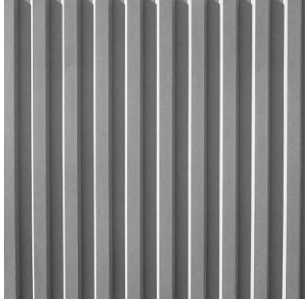
ALL GLAZING TO BE AS PER PART J  
ALL WEST GLAZING TO BE FROSTED - FOR PRIVACY



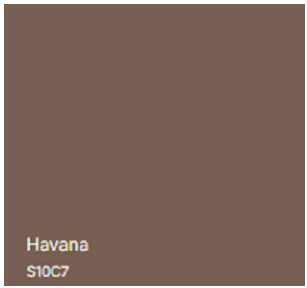
02 SOUTH STREET ELEVATION



FM\_1



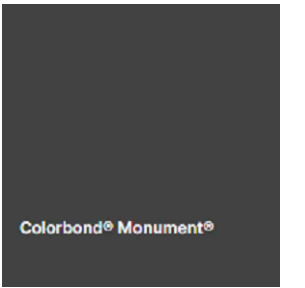
FM\_2



FM\_3 - HAVANA



FM\_4



MONUMENT COLOUR



FM\_11\_REFERENCE ONLY

ALL DIMENSIONS & LEVELS TO BE CHECKED ON SITE BY CONTRACTOR PRIOR TO CONSTRUCTION. ALL BOUNDARIES & CONTOURS SUBJECT TO SURVEY. ALL RIGHTS RESERVED. THIS DRAWING MAY NOT BE REPRODUCED OR TRANSMITTED, IN PART OR IN WHOLE WITHOUT THE PERMISSION OF CRAWFORD ARCHITECTS PTY LTD

© CRAWFORD ARCHITECTS PTY LTD 2019  
SUITE 3.01, LEVEL 3.80 MOUNT STREET  
NORTH SYDNEY, NSW 2060 AUSTRALIA  
ABN: 56 120 779 106  
NOMINATED ARCHITECTS:  
TONY GRAY 5303 & PAUL GODSELL 6726  
ARCHITECTS PTY LTD

THIS DRAWING IS NOT TO BE USED FOR CONSTRUCTION UNLESS APPROVED BY A DIRECTOR OF CRAWFORD ARCHITECTS PTY LTD

N	23.11.02	DA ISSUE
ISSUE	DATE	AMENDMENTS

NARBETHONG PTY LTD

PROPOSED COMMERCIAL DEVELOPMENT

82 KITCHENER PARADE, BANKSTOWN, NSW 2200

ELEVATIONS

SCALE: 1:100 @ A1

APPROVED: HJ  
DRAWN: TG  
CHECKED: MAR  
DATE: MAR  
STATUS: DA

PROJECT NUMBER: 19061

DRAWING NUMBER: A201

ISSUE: N

crawford architects